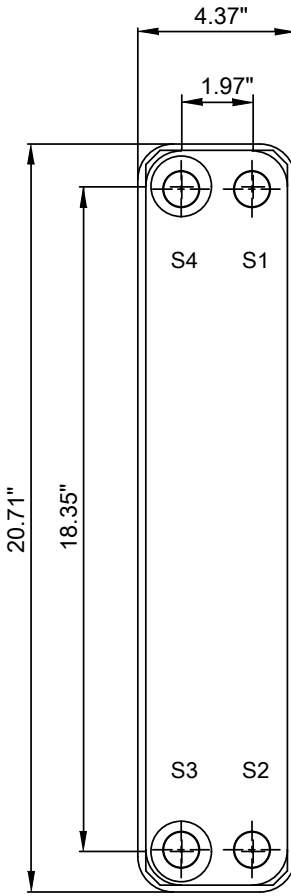
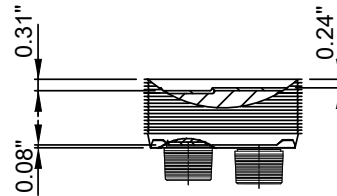
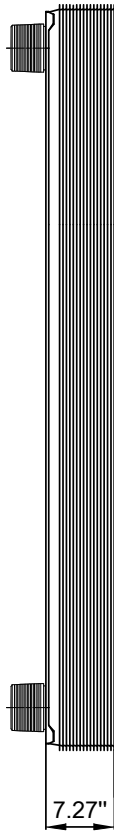
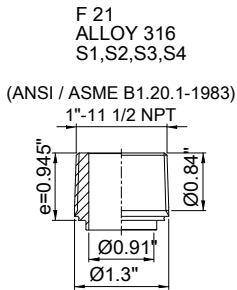


Note that all unique customer requirements (i.e tolerance) need to be verified thru Alfa Laval.



Frameplate is depressed 0.08 inches at connection S3/S4  
Pressureplate is depressed 0.08 inches / even number of channel plates  
at connections T3/T4 / uneven number of channel plates at  
connections T1/T2.

HEATING SURFACE                   ft<sup>2</sup>  
NETWEIGHT                           38.1 lb  
OPERATING WEIGHT                lb  
PLATE MATERIAL                    ALLOY 316  
PLATE GROUPING                    1\*34H/1\*35H

T1 T2 T3 T4 locations on back side  
correspond to S1 S2 S3 S4 on front side

ALL DIMENSIONS IN INCHES

SIDE	MEDIA	INLET	TEMP.	OUTLET	TEMP.	FLOW RATE	PRESSURE DROP	LIQUID VOL.
1	Water	S1	°F	S2	°F	lb/h	psi	0.12 ft <sup>3</sup>
2	Water	S3	°F	S4	°F	lb/h	psi	0.11 ft <sup>3</sup>

PRESSURE VESSEL APPROVAL

PED/CRN



AlfaNova 52-70H (3287000900)

www.alfalaval.com

CUSTOMER NAME / REF. NO.

TOTAL LENGTH                    8.2 in  
TOTAL WIDTH                      4.4 in  
TOTAL HEIGHT                    20.7 in

COMPANY / REF.  
Alfa Laval Nordic AB  
Alfa Laval Inc.



8/25/2021  
REV 0